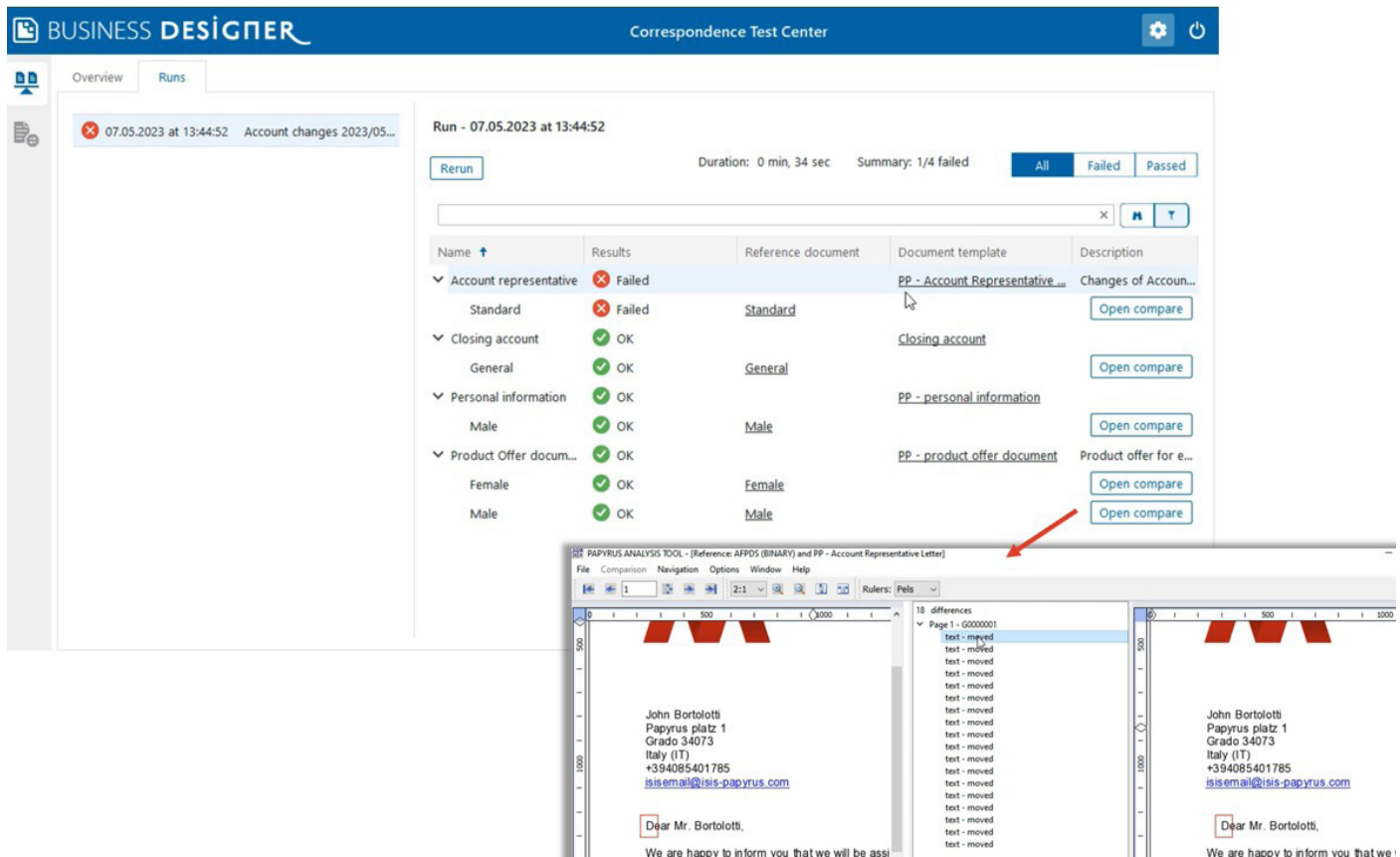


# Papyrus Test Center 7



## Product Description

The Papyrus Test Center Designer provides business and IT with the necessary means to effectively define, administrate and execute **business document test environments**. It is designed to meet the requirements of regular document test runs after design changes as well as to **support document migration projects** with thousands of documents and related test data. The Test Center can be used after any change to detect which documents behave differently. This can be changes in a document application, document templates, software releases or technical upgrades, such as migrations to another operating system or to the Cloud.

All test cases are centrally managed in the Test Center and can be freely structured to optimize test iterations and cut down the overall testing effort. With **Papyrus Adapters** the needed test data can be seamlessly integrated with existing business applications or legacy systems.

**Papyrus Test Center** builds on the Papyrus Business Correspondence Solution and is delivered as ready-to-use framework for Papyrus WebRepository installations.

*Take ownership  
of document quality*

## Contact

**Europe**  
T: +43-2236-27551  
F: +43-2236-21081

**America**  
T: 817-416-2345  
F: 817-416-1223

**Asia Pacific**  
T: +65-6339-8719  
F: +65-6336-6933

**Email & Web**  
info@isis-papyrus.com  
www.isis-papyrus.com

© 2023, ISIS Papyrus,  
replaces all previous  
documentation.

**Key Benefits**

- Enterprise-level business software solution for consolidation, integration and automation of business documents
- Highly automated document regression tests
- Automated testing of thousands of test cases
- High-volume document compare
- Visual comparison of differences with the interactive document compare
- Integrated Papyrus Business Designer for document and building block corrections
- Cut down 1:1 document migrations from multiple person-years to 6-12 months
- IT and business departments can define regular document test cases
- Speed, integration and efficiency in defining test cases is achieved with the consolidate Papyrus platform approach
- No coding needed
- Integrates with existing test from external systems
- Fast implementation of document releases with integrated change management
- Lowers cost of ownership and ROI potential within months
- Processes offer agility and flexibility
- Applicable for central and decentralized organizations
- High level of personalization based on document or content types
- No database administrator required
- Multi-platform scalability

**Test Case Definitions**

- Define test cases in categories
- Select test documents from template library
- Define document test variants with different test data
- Upload documents as "golden reference" for automated document compare
- Run single test cases or in batch
- Verify test case results
- Debug deviations from the reference document with Papyrus Business Designer
- Integrates with Papyrus Converter for legacy document migration projects (DOPiX, Assentis, ASF/DCF, etc.)

**Papyrus Document Compare**

- Fully integrated into the Test Center UI
- Compares automatically with the provided document reference
- Shows differences on each page of a document
- Allows to export differences as XML for batch compare

**Papyrus Business Designer Integration**

- Test Center UI integrates Business Designer in dedicated workplace
- Utilize full Business Designer capabilities
- Inspect document differences and apply changes
- Rerun test cases and verify if changes meet the business requirements

**Data Integration**

- Define SOA-based data interfaces via Papyrus Adapters
- Configure Service Tasks for automatic data execution
- Integrate with databases (Oracle, DB/2, ...)
- Integrate with 3rd party applications like SAP, Salesforce, etc.
- Business application integration, legacy system and storage

integration with the wide range of Papyrus Adapters and Typemanager interfaces

- Online channels/portals - Web Services, SOAP, HTTPs, Social, Mobile-REST
- Email/messaging – SMTP, POP3, SMS
- Mainframe - JES 2/3 & CICS
- Databases - Oracle, SAP, DB2, MS-SQL, ODBC
- Java, .Net, MQ-Series, FILE, XML, FAX, VOIP, SNMP, LDAP, CMIS
- Comprehensive document and object support - MS Office, SMS, chat, wiki pages, HTML, XML, PDF, audio, video, CAD/CAM, X-ray, photos, etc.
- Seamless integration to Papyrus WebArchive or any other third-party vendor archive
- Integrated security with authentication, authorization, auditing, encryption, HTTPs
- Digital signature PKI support

**OMNI-channel capabilities**

- Compare single source document variants (AFP, PDF, email, HTML, text)

**Change Management**

- Define Releases and delivery dates as release manager with Business Designer
- Utilize standard release processes (private and group development, hotfixes)
- Define individual release processes (SIT, UAT, ...)
- Integrate with business acceptance procedures

**Reports**

- Logging of all changes in the test cases
- Reports freely definable
- Reports available as AFP, PDF, CSV, etc. or responsive HTML documents
- Integrate with existing reporting applications (PowerBI, ...)

**Prerequisites**

- Papyrus WebRepository infrastructure (Windows, Linux, Unix, z/Linux)
- Papyrus Business Designer
- Standard PC running Windows 8/10/11/Server 2012/Server 2016/Server 2019/Server 2022
- Min. display resolution of 1920 x 1080

**Order Information**

Papyrus Test Center for Windows

**Training**

ISIS Papyrus offers in-house workshops and standard courses for user training.

**Order Information**

The Terms and Conditions for ISIS Papyrus Software Products apply. Free service period is 6 months after installation. A maintenance agreement is offered optionally for updates and product support.