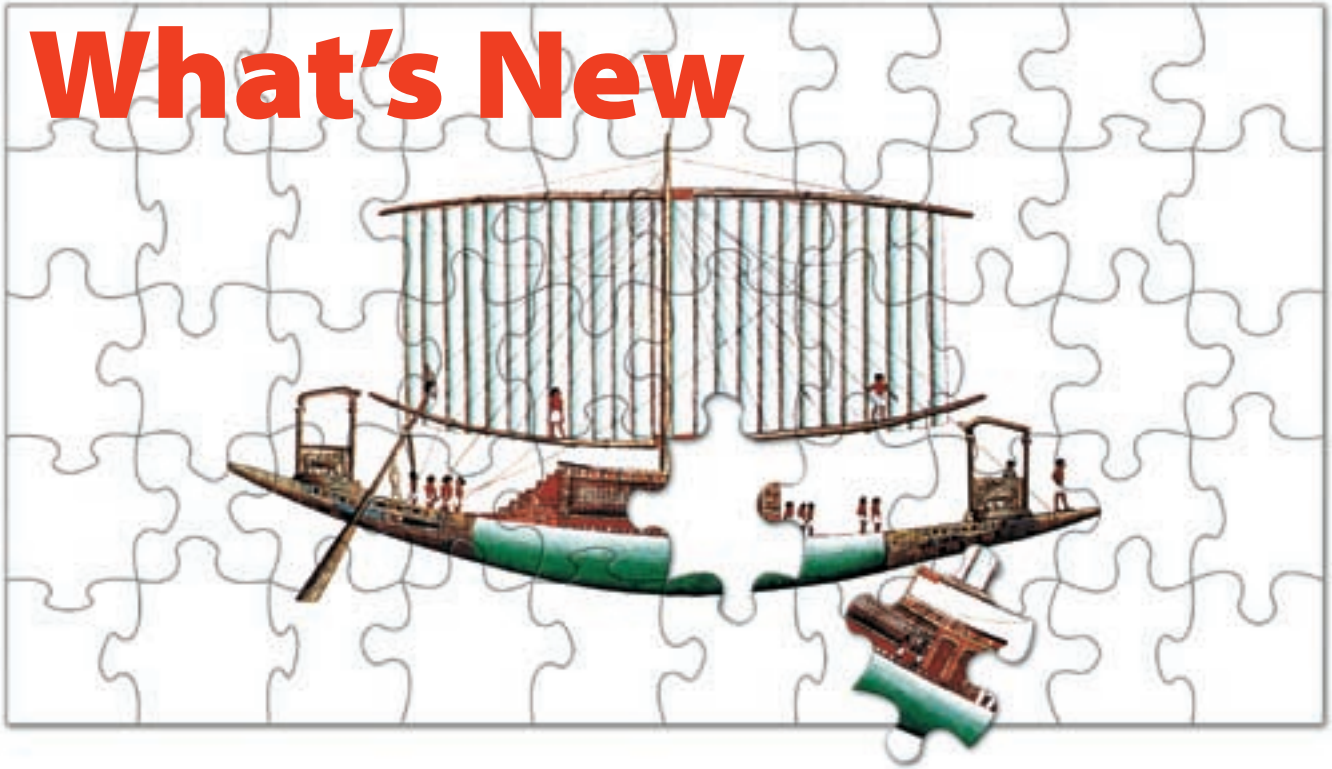


What's New



New Frameworks, Key Features, Functions and Extensions available for the Papyrus Document System

- ▶ **Automated Document Factory (ADF)**
enables greater flexibility and improves output management efficiency, decreasing process costs
- ▶ **Document Control and Security**
bringing privacy regulation compliance to electronic documents
- ▶ **Extended support for PDF documents**
output management for PDF generated documents and printing to any laser printer
- ▶ **Powerful new XML/HTML read interface into the DocEXEC formatter**
fast data parsing definition and up to 10 times faster formatting
- ▶ **Central Document Resource Collection**
understanding who created a resource and where it is used
- ▶ **Sticker Function**
adding meta information to the document
- ▶ **Papyrus Compare**
AFP compare tool for batch and graphical analysis
- ▶ **Enhanced high speed DocEXEC formatting on Opteron technology**
up to 38 Million pages per hour

The new functions offer extended capabilities and help deliver flexibility and automation for all your business document applications.

What's New

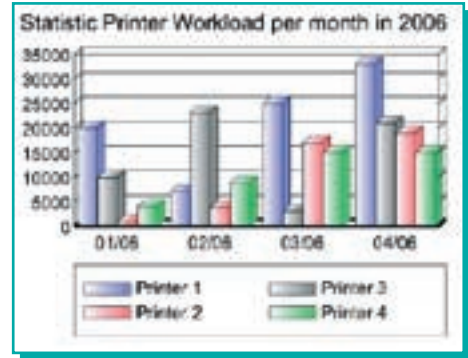
The Papyrus Document System has been extended with innovative new features to enhance user productivity and new capabilities for automated processing to help clients reduce costs.

Papyrus Automated Document Factory (ADF)

Intelligent end-to-end automated production processes for many tasks in the print and mail shop that today are handled manually. The ADF enables you to reduce costs, minimize errors, maintain schedules, eliminate costly reprints, and improve customer satisfaction.

Highlights: Single Point of Control, Tracking & Monitoring

- Centralized management of all document resources for formatting, printing, post processing, e-mail, fax, web delivery and archiving
- Job level control functions for all laser printers (IPDS, PCL, Postscript, PDF, IJPDS) in the LAN and across all platforms (z/OS, AIX, SUN, HP, Linux, Windows).
- User and operator notification by e-mail, SMS, SNMP and Net send of printer status and interventions
- Intelligent document routing (best match) and scheduling for print and electronic delivery
- WebPortal browser-based user interface or Client/Desktop
- Load balancing across servers and processors
- Hot backup for production servers
- Reprinting and automated document tracking
- Barcode, OMR and 2 D datamatrix support
- Document bundling, sorting and merging
- Automated priority mail and inserter controls

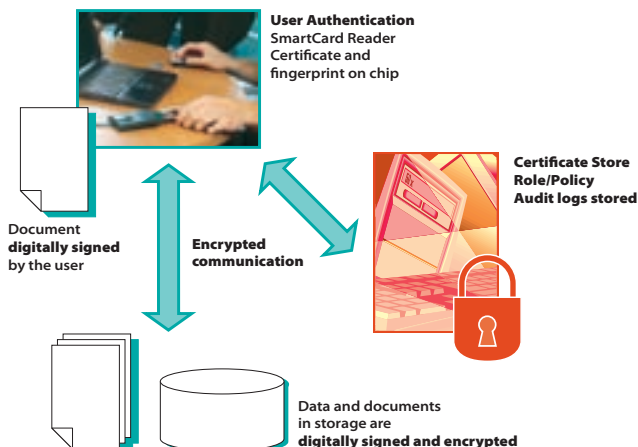


ADF Productivity Tracking

Document Control and Security

Highlights:

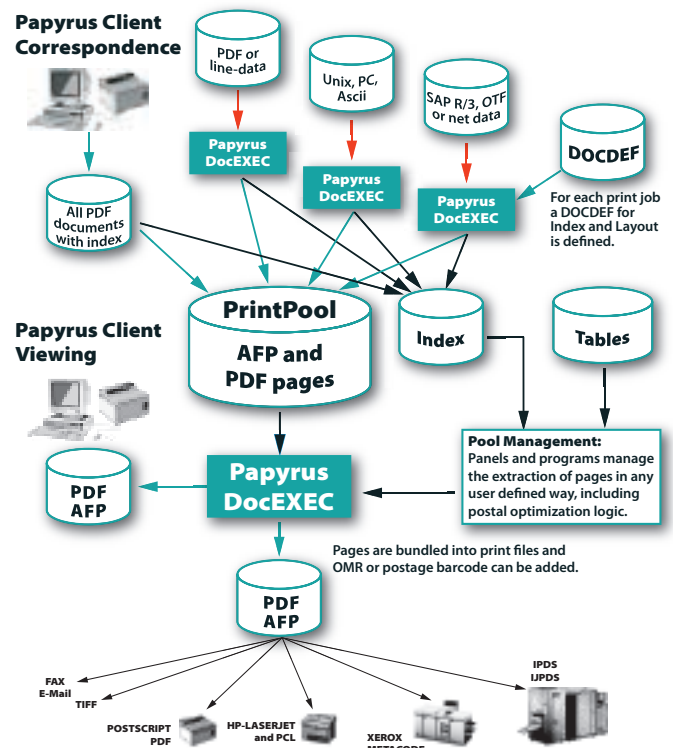
- Papyrus application log-in or single sign on
- User authentication by SmartCard reader and finger print
- User authorisation by ROLE and POLICY
- Digital signature (PKI)
- Data encryption for confidentiality
- Audit Trail
- Support of HTTPs for Web Applications



Extended support for PDF in Papyrus

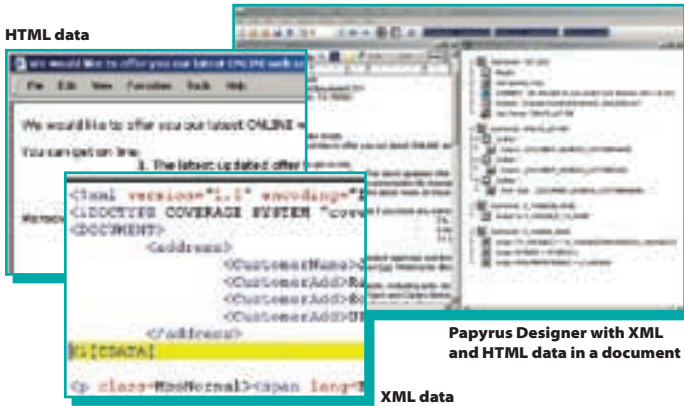
Highlights:

- Import PDF documents into the Papyrus DocEXEC formatting engine for further processing
- Bundle, sort and merge PDF and AFP documents in the Papyrus PrintPool for optimized print and mail
- OMR and Barcode and Indexes are supported
- PDF documents can be printed to IPDS, PCL, Postscript, IJPDS and Xerox Metacode
- PDF documents can be archived in Papyrus WebArchive
- Papyrus DocEXEC formats documents optionally in PDF and AFP



New XML/HTML data import in record time

Seamless integration of document applications using XML DTD and HTML Text. Up to 10 times faster formatting and high speed data parsing.



Central Document Resource Collection

Provides central control and administration for all types of document applications across platforms and output channels.

Highlights:

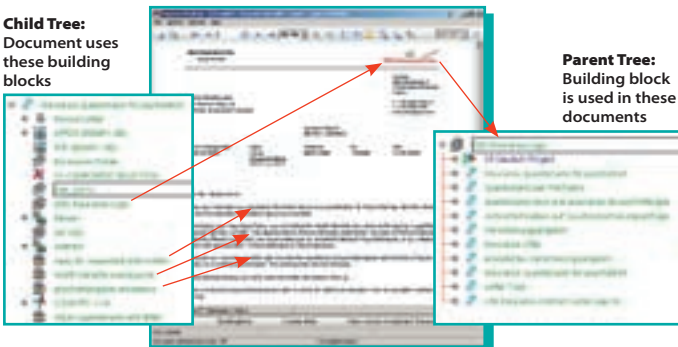
- Document resources are only developed once and stored in a central WebRepository
- Version control and validation information is defined
- Document elements are reused across multiple document applications
- Users can access elements by their authorization (ROLE and POLICY) using the WebPortal interface or the Papyrus Client



Papyrus WebRepository shows a Parent/Child Tree

- Who is the owner of the document element i.e. text element?
- When was it created?
- Is there a variant of the version i.e. other language or department?
- In which business documents is the element used?
- If a change is made to the element which documents will be affected?

Child Tree:
Document uses these building blocks



Parent Tree:
Building block is used in these documents

Sticker Function

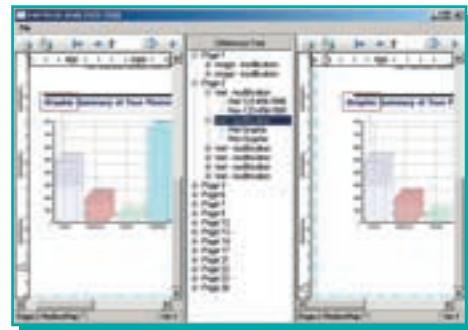
Adding Comments to Text and Data.

Highlights:

- Stickers are easily defined in the Papyrus Designer
- Sticker information is stored as META Information in the Papyrus WebRepository
- Stickers are used i.e. for sign-off processes or in case of change requests
- Stickers are shown and accessed on the archived copy of the document but are not printed
- Document original is not changed by adding comments
- There can be multiple stickers from different people in different colors on one document

Papyrus Compare

When comparing two AFP Files the differences can be either verified step-by-step or all at once.



Highlights:

- Generic compare tool for batch and graphical analysis
- AFP File Compare
- Compare Capture Recognition Results

DocEXEC Formatting Speed

Benchmarks: Opteron Server, single thread

Server Configuration Opteron (Quad):

AMD 2x Dualcore-Opteron 280 (2,4 Ghz), Windows 2003 Server 64 Bit, 6GB RAM, Raid0 with 2 Serial-ATA HD "Raptor" (10000 rpm)

Project: Marketing Letter - single pages with logo, text and address data

	pages/sec	pages/hour
AFP	10,631.27	38,272,572
PDF	2,395.81	8,624,916
BOTH	4,404.18	15,855,048

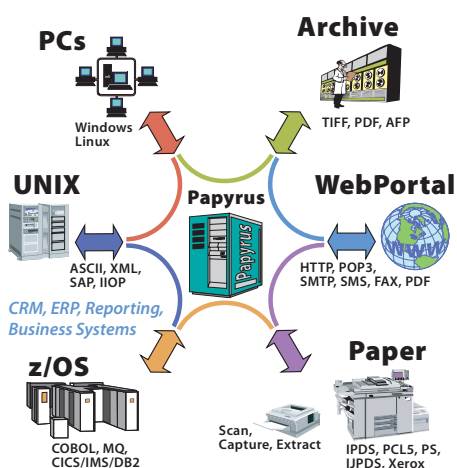


Project: Bank Statement - dynamic page breaks, address & account data, table, Overlay, IOCA and IM1.

	pages/sec	pages/hour
AFP	1,518.04	5,464,944
PDF	225.95	813,420
BOTH	438.52	1,578,672



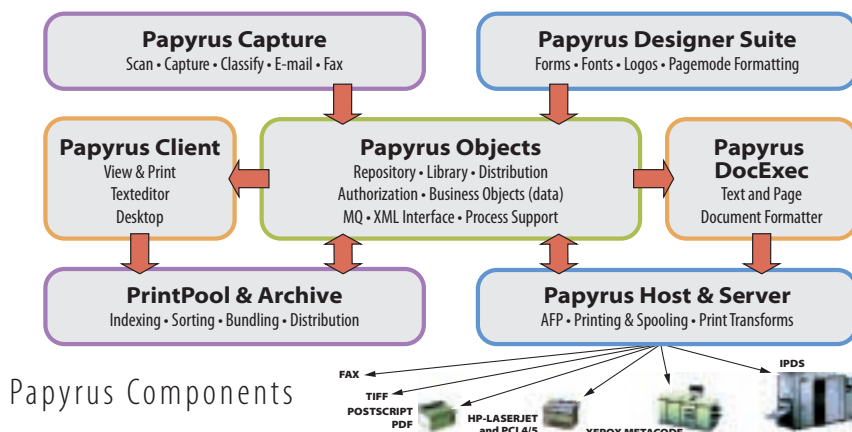
A **comprehensive and scalable solution** for centralized management of document applications, print and output operations that span web, client/server and host environments.



Papyrus Document Frameworks

- Automated Document Factory
- Enterprise Application Integration
- Enterprise Output Management
- Enterprise Content Management
- Business Process Management
- Portal and Web Applications
- Change Management
- Correspondence
- Campaign Management
- Print Management
- Capture/Classify/Extract
- E-mail, Fax

Organizations can **define, measure, and manage** output management across complex heterogeneous environments from centralized control points.



A selection from over 2000 ISIS Papyrus References:

Finance Sector uses Papyrus

Citibank, Deutsche Bank, HFC Bank, UBS, Credit Suisse, BNP, Capital One

Insurance uses Papyrus

Allianz, Generali, Thrivent, RAS, Great West Life, Sun Life, HBOS, Zürich, Hibernian

Healthcare uses Papyrus

AXA, HUK, Empire Health Choice, Siemens Medical Systems, Sanitas, Hallesche

Telecommunication uses Papyrus

Bell South, SwissCom, T-Mobile, Debitel, Orange, Singapore Telecom, Belgacom

Public Sector uses Papyrus

EDS Department of Social Services, EDS Jobseeker, European Patent Office

Manufacturing uses Papyrus

Avon Cosmetics, Bally Shoes, BASF, Canon, IKEA, Miele & Cie, Renault, Volkswagen

ISIS Locations

International Headquarters, Austria

ISIS Information Systems GmbH
 ISIS Marketing Service GmbH
 ISIS Knowledge Systems GmbH
 Alter Wienerweg 12
 A-2344 Maria Enzersdorf
 T: +43-2236-27551-0
 F: +43-2236-21081
 E-mail: info@isis-papyrus.com

US Headquarters

ISIS Papyrus America, Inc.
 301 Bank St.
 Southlake, TX 76092
 T: 817-416-2345
 F: 817-416-1223

Asia-Pacific Headquarters

ISIS Papyrus Asia Pacific Ltd
 9 Temasek Blvd.
 #15-03 Suntec City Tower 2
 Singapore 038989
 T: +65-6339-8719
 F: +65-6336-6933

England

ISIS Papyrus UK Ltd
 25 Cherry Orchard North
 Kembrey Park
 Swindon
 Wiltshire SN2 8UH
 T: +44-1793-644616
 F: +44-1793-692978

Germany

ISIS Papyrus Deutschland GmbH
 Heerdter Lohweg 81
 40549 Düsseldorf
 T: +43-2236-27551-0
 F: +43-2236-21081

Benelux

ISIS Papyrus Benelux
 Braine l'Alleud Parc de l'Alliance
 9, Boulevard de France, bât A
 1420 Braine l'Alleud
 T: +32-2-352-8720
 F: +32-2-352-8802

Italy

ISIS Papyrus Italy Srl
 via Monte Navale 11
 10015 Ivrea (TO)
 T: +39-0125-6455-00
 F: +39-0125-6455-150

France

ISIS Papyrus France SARL
 La Grande Arche Paroi Nord
 92044 Paris La Défense
 T: +33-1-40903510
 F: +33-1-40903501

Spain

ISIS Thot SL
 Sainz de la Calleja, 14
 28023 Madrid
 T: +34-91-307-78-41
 F: +34-91-307-75-08

www.isis-papyrus.com