

Get a headstart on new document printing technologies with Papyrus Print Services.

Papyrus WebControl Functionality

Spool Management

- ☞ Manual and scheduled job submission (local and remote)
- ☞ Define customized queues from templates for various jobs and spools
- ☞ User management capabilities allow the user or a workgroup to access queues and jobs that run on one or multiple servers depending on role and privilege
- ☞ Hold output queues with a simple mouse click
- ☞ Reroute output spools to channel attached printers or LAN attached printers
- ☞ Prioritize spools for faster throughput or split big jobs in smaller units and print them parallel on several printers
- ☞ Drag and drop job control
- ☞ Selection of job priorities
- ☞ Job scheduling e.g. print large jobs last
- ☞ Creation of multiple job classes
- ☞ User management/multi user enabled
- ☞ One Client (Desktop) accesses multiple servers
- ☞ Reroute jobs to other queues
- ☞ Submit printjobs from local or remote workstations
- ☞ Load Balancing of printers
- ☞ Best Match job queue criteria

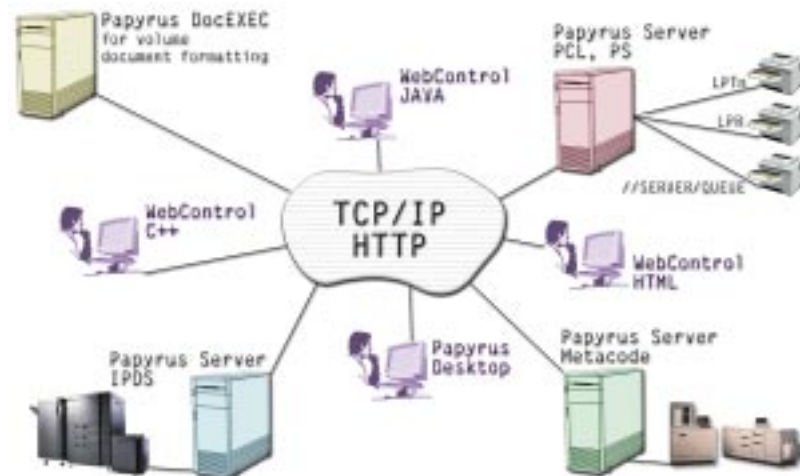
Print Management

- ☞ Manage print jobs on all printers with TCP/IP address from any PC in the network
- ☞ Manage DocEXEC formatting jobs
- ☞ Perform Pagedef - Linemode execution (PageEXEC)
- ☞ Support for following input streams: AFP to PCL, IPDS, IJPDS, Xerox Metacode, PDF, PS, Fax, TIFF, GIF
- ☞ Print following data formats directly: PCL, PS, Metacode, PDF, IJPDS



Job Management

- ☞ Control printer independent documents, which can also be published through CD-ROM, FAX, E-Mail or Internet
- ☞ Manage the complete cycle of a volume production job
- ☞ Create jobs from predefined templates
- ☞ Multistep jobs e.g. DocEXEC - IPDS - Archive
- ☞ Job splitting for parallel processing
- ☞ Starting third party programs
- ☞ Job logging and recovery



Customers

Hapag-Lloyd, Germany

Three MVS mainframes use **Papyrus Host/FSS** to manage and transfer data and print resources via JES2/3 to 100 **Papyrus Servers** worldwide for the printing of shipment documents on local PCL printers. In several locations the **Papyrus Server/Fax** solution is used for high volume faxing of MVS mainframe documents.

Stroede Data, Sweden

Printing AFP applications with **Papyrus Server** running on WinNT and OS/2 to channel attached IPDS plus network attached Xerox Meta-code and PCL printers.

Equitable Life, UK

Printing AFP applications on MVS using **Papyrus Host/Metacode** to directly connected Xerox Meta-code printers plus PCL printers in the LAN.

Citibank Asia Pacific

Printing consolidated bank statements using **Papyrus Server** in many different countries throughout Asia and Eastern Europe on IPDS, Xerox Metacode and PCL printers. The applications are mixed mode English and Chinese language. Using **Papyrus Server** there is a free choice of printer for every country. DBCS capable printers are not required for DBCS printing.

American Airlines, USA

Papyrus Server is used to print a pay-check application from SAP data on central IPDS and remote PCL printers.

Victoria Insurance, Austria

Printing AFP documents with **Papyrus Server** to channel attached Xerox spot color printers.

http://www.isis-papyrus.com

100% matching results on any printer with the same resolution!

Papyrus Print Services

The Concept

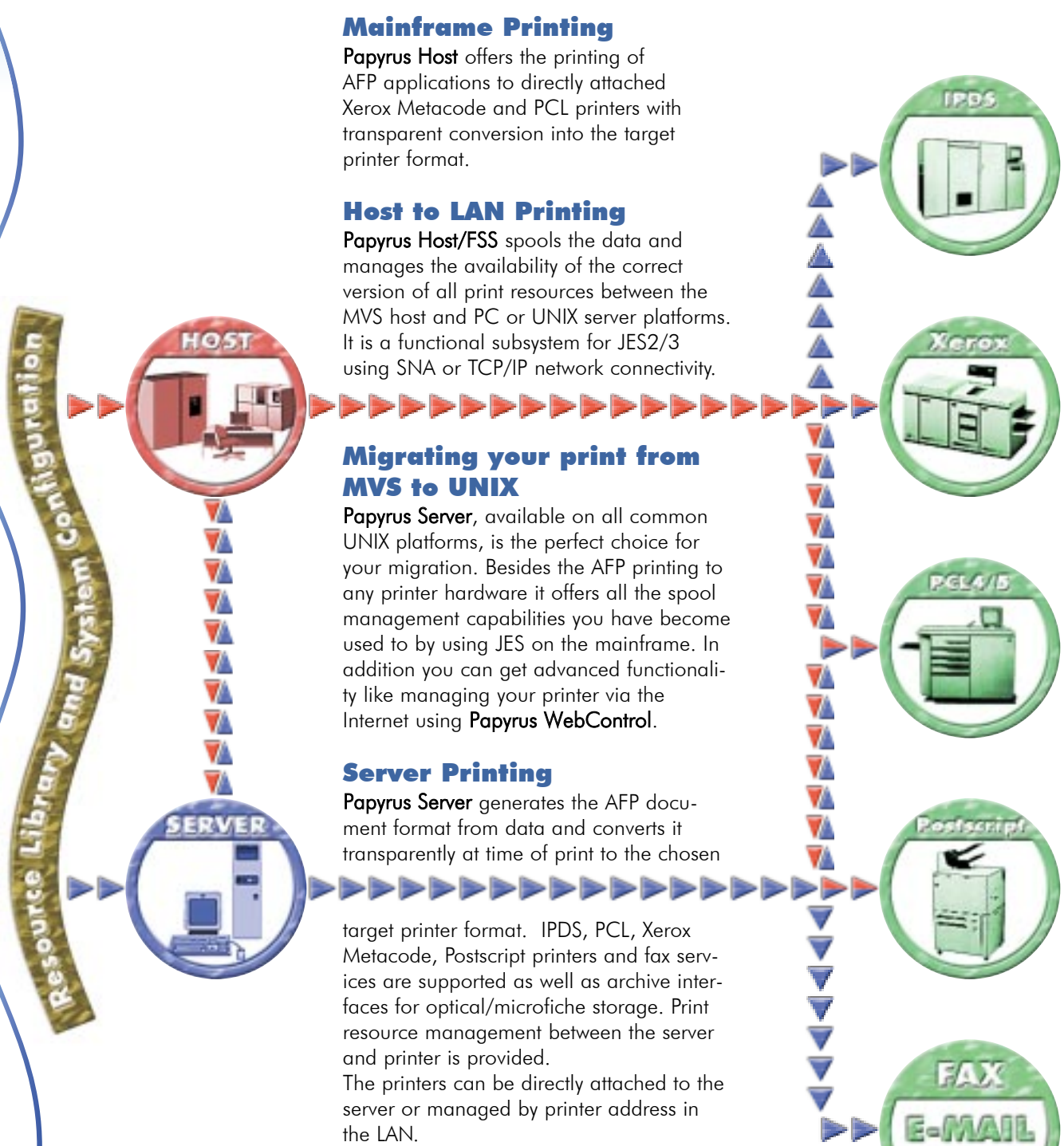
The Papyrus Document System uses a unique Middleware concept which separates the document application from the printer hardware. At time of print the platform and printer can be chosen freely without any changes to the user application. Even printer limitations such as resolution, front/back paper control or cutsheet/fanfold/roll printing can be controlled independently from the layout. The document is converted transparently and seamlessly by Papyrus to the chosen target printer format. This includes fonts, forms and graphics. Optionally the document can be viewed in perfect quality before print.

Benefits and advantages:

- ☞ Substantial time and money savings by developing forms and document applications only once for use with any printer type and platform
- ☞ High flexibility: Switch printers at any time
- ☞ Get identical results of a printed document on different printers with the same resolution
- ☞ Convenient print spool management with a JAVA based, platform independent, graphical user interface
- ☞ Fast and easy reprint of selected pages
- ☞ Print less by viewing before print

The input data format:

Papyrus generates a printer independent AFP document from any data file to print to any printer on the market. Xerox DJDE, IBM Pagedef and SAP data formats are supported too.



Mainframe Printing

Papyrus Host offers the printing of AFP applications to directly attached Xerox Metacode and PCL printers with transparent conversion into the target printer format.

Host to LAN Printing

Papyrus Host/FSS spools the data and manages the availability of the correct version of all print resources between the MVS host and PC or UNIX server platforms. It is a functional subsystem for JES2/3 using SNA or TCP/IP network connectivity.

Migrating your print from MVS to UNIX

Papyrus Server, available on all common UNIX platforms, is the perfect choice for your migration. Besides the AFP printing to any printer hardware it offers all the spool management capabilities you have become used to by using JES on the mainframe. In addition you can get advanced functionality like managing your printer via the Internet using Papyrus WebControl.

Server Printing

Papyrus Server generates the AFP document format from data and converts it transparently at time of print to the chosen target printer format. IPDS, PCL, Xerox Metacode, Postscript printers and fax services are supported as well as archive interfaces for optical/microfiche storage. Print resource management between the server and printer is provided. The printers can be directly attached to the server or managed by printer address in the LAN.

Printing from several printer trays: Papyrus uses the AFP FORMDEF definitions to control input bin and simplex/duplex switching for different paper types.
Supported platforms: AIX, Sun Solaris, HP/UX, Dec Alpha, NT and OS/2.

Printing to IPDS

Papyrus Server/IPDS offers the capability to spool and print any line-data or formatted AFPDS application to any channel attached or TCP/IP LAN attached IPDS printer.

Printing to Xerox Metacode

Papyrus Host/Metacode and Papyrus Server/Metacode generate the Xerox Metacode on the mainframe (MVS) and on server platforms (AIX, Sun, HP, DEC Alpha, NT, and OS/2). You can print to S/370 channel and TCP/IP attached 40XX printers or alternatively to tape.

Printing to PCL

Papyrus Host/PCL and Papyrus Server/PCL can generate the PCL on the MVS mainframe or on the server and print to any directly attached PCL printer or IP address in the LAN.

Printing to Postscript

Papyrus Server/PS generates a Postscript file to be printed on various Postscript printers. Papyrus also provides a conversion to the Xerox VIPP format to print true color documents on Xerox Postscript printers.

Printing to Scitex printers

Papyrus supports Scitex highlight color printers.

Distribution via Fax, e-mail and PDF

Papyrus Server/Fax generates the TIFF and PCL format which is the supported format of many fax machines on the market today. Papyrus also supports the TOPCALL fax format for high quality fax solutions. All documents can be distributed by e-mail in PDF or GIF format for PC viewing.

Special Features

Color Printing

Papyrus supports spot color in IPDS, Scitex and Metacode plus full color Postscript, PCL5 and IPDS printing.



View before print

With Papyrus WebControl authorized users can access the print server from their desktops to view and manage print queues. Users can view documents by index using the Papyrus AFP Viewer and print selected pages.



Print Resolutions

Papyrus supports 240, 300, 600 dpi and outline fonts.

