

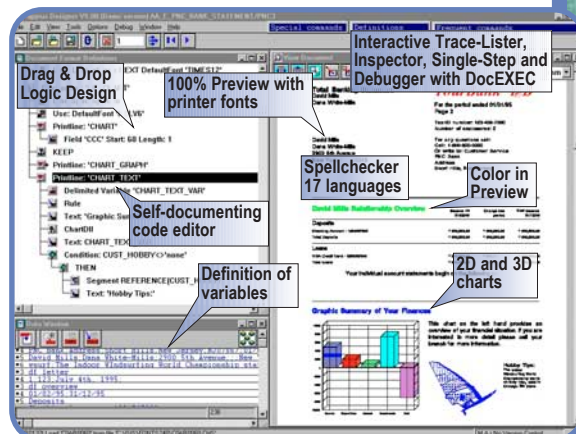
# Take advantage of Papyrus' superior functionality.

# ISIS Papyrus.

## Business Document Automation and Management™.

### Papyrus Designer Suite

- Document design is fully integrated and graphical
- Highest presentation accuracy. 100% WYSIWYG. Dot accurate
- Embedded formatting engine enables immediate viewing of all document pages during design
- Drag and drop document elements
- Visual programming using logic tree. No coding required
- Cross referencing of data, logic and document
- Self documenting
- Very complex document logic possible due to programming language support
- Work with the real data, logic, print resources and document on screen
- Use any Adobe, TrueType or AFP rasterfont in 240, 300 or 600 dpi
- Generate various full color chart types from the input data



### Benefits

#### Of a Business Document System:

- Greatly simplify document development
- Manage a business document library
- Access variable data in files and databases
- Customize each document to the receiver
- Enable production on any platform
- Output to any target medium or printer
- Archive and retrieve documents
- Improve user productivity and quality
- Ensure fast return on investment

#### Of an Integrated System:

- Reduce development time and cost
- Limit dependency on system programmers
- Shorten the time-to-market for documents
- Improve document functionality and quality
- Deploy to any platform and printer
- Increase reusability and long-term stability
- Reduce printing and print management expense
- Control cost for archiving and workflow
- Get return of investment in less than two years

#### Papyrus Unique Benefits:

- A future-proof document application blueprint
- Modular step-by-step implementation
- No change required to print data-streams
- Supports AFP applications and resources
- Supports existing Xerox DJDE datastream
- ASCII / EBCDIC codepage independent
- Unicode and DBCS Japanese/Chinese supported
- Hebrew and Arabic right-to-left writing
- The highest presentation accuracy possible
- The most integrated and powerful architecture

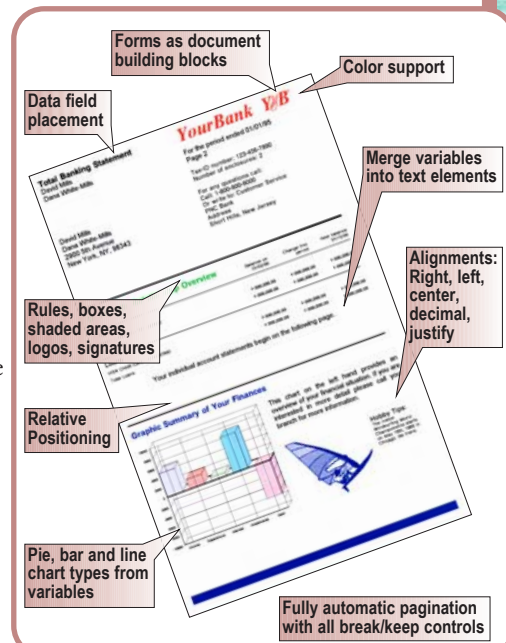
### Experience it yourself!

#### Unheard of in our industry!

- You don't pay for software unless you use it
- Tryout period before you pay
- No more guessing - just hard facts
- Buy only a one week in-house workshop
- Real application development - not just demos
- You define the criteria for a successful installation
- Test the production run on your own system
- Highest level of expert training
- Pressure free evaluation of the ISIS Papyrus Document System in your own infrastructure

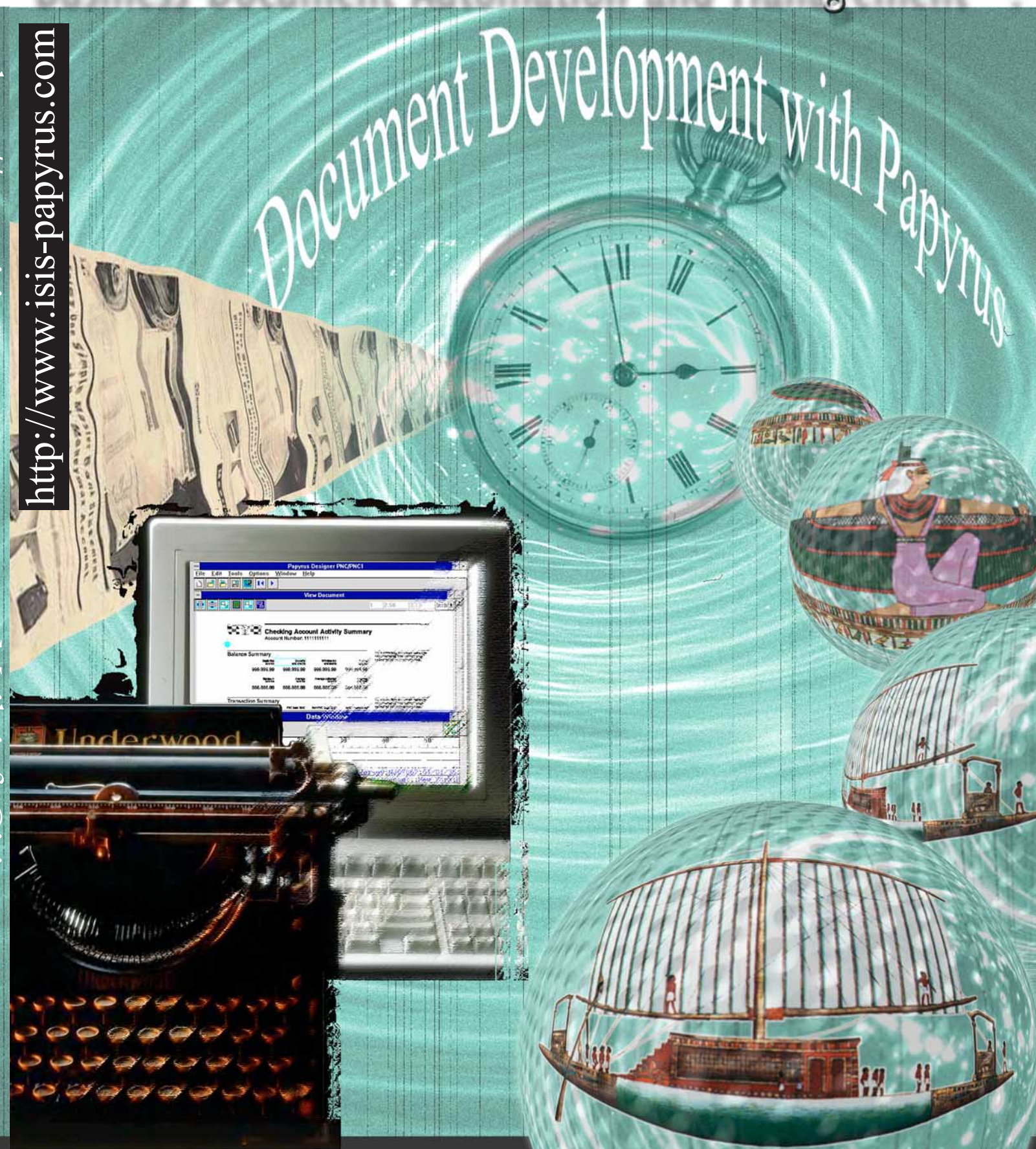
### Papyrus DocEXEC Formatter

- Use any data type, structure and sequence
- Upward compatible from PPFA
- Supports any type control structure (channel codes, DJDE, SAP, <TAGs>)
- Available on MVS, AIX, Sun, HP/UX, DEC Alpha, WinNT, 95, OS/2
- Text and page formatter
- Dynamic and scalable TIFF to IOCA conversion
- List and log files
- Substitution tables and upper/lower case conversion
- Text and table formatting with right, left, center, decimal and justify alignment
- Dynamically inverted or shaded text fields and areas
- Document colors can change with data variables
- Print variable text in any angle
- Define any number and size of logical pages for one physical page
- Decimal positioning for columns
- One formatter run produces '1 of n' page numbering and OMR controls
- Dynamic chart graphs from variable data. 2D and 3D charts in full color.
- Generate archive indexes for multiple output files (i.e. ACIF, ...)



<http://www.isis-papyrus.com>

[eMail: info@isis-papyrus.com](mailto:info@isis-papyrus.com)



Evolution did not stop with walking upright.

# Real World Documents Created with Papyrus

## Consolidated Bank Statements

- ✓ Consolidated statement including account types of a client in one multipage document
- ✓ Pages are numbered '1 of n'
- ✓ On first page: Summary table of all accounts with dynamic background shading in color
- ✓ A unique segment for each account type increases readability
- ✓ Column subtotals are calculated at page break
- ✓ An account summary is provided by a dynamic chart generated from the input data
- ✓ Incorporate high quality pictures of account representatives or advertising artwork
- ✓ Using fixed x/y positioned elements in a dynamic document
- ✓ In this example formatting is done on MVS and printing is on a Xerox highlight color printer
- ✓ OMR codes control post processing equipment

**Financial institutions around the world utilizing Papyrus**  
 UBS United Bank of Switzerland ... Citibank Asia Pacific  
 Credit Suisse/First Boston ... Rabo Bank, Netherlands  
 Hongkong Bank ... National Bank of Canada ... and many more

*Says Don Maxwell of The Mutual Group, Canada:*  
 "Application delivery time has been cut to 1/5th to 1/10th of the time that it took using DCF. This is due to a much simpler data file, accurate GUI interface, and rich functionality of the product."

## Special features used in the Citigold application.

- ✓ DBCS support: Chinese, Japanese, Korean
- ✓ Print mixed mode: English and Chinese on one page, even in one line of data/text
- ✓ Consolidated statements include 26 different account types
- ✓ Marketing Messages are generated by the marketing department in MS-Word and placed conditionally depending on the result for each account type
- ✓ Check image printing: Checks are scanned in TIFF, converted directly to IOCA by the formatter, resized to fit the available space and printed at the nominal speed of the printer
- ✓ '1 of n' page numbering
- ✓ Dynamic bar and pie charts from data input
- ✓ Print document to OCE IPDS printers, Xerox Metacode printers and PCL LAN attached printers using the Papyrus Print Services

**More financial institutions utilizing Papyrus**  
 Den Danske Bank, Denmark ... Banco Pastor, Spain  
 Volkswagen Financial Services ... OUB Overseas United Bank  
 COOP Bank Switzerland ... and many more

*Says Sven Meurlin of Stroede Data, Sweden:*  
 "One of the key factors was the software support offered by ISIS. After having used Papyrus for almost a year, we are very happy with the immediate and knowledgeable support we received."

## Personalized Insurance Documents

- ✓ Every document is highly customized and unique for each person with only the relevant pages printed and mailed
- ✓ Different text formatting styles are used across pages
- ✓ Inverted headlines in color
- ✓ Inverted summary fields in color
- ✓ Legal text generated in MS-Word is merged into the flow of the document
- ✓ One formatting run produces '1 of n' page numbering plus OMR and BAR CODES to control post processing equipment
- ✓ Complex table functions simplify data presentation
- ✓ A dynamic table of contents is printed on the first page
- ✓ This example is printed and formatted on MVS using Xerox highlight color printers
- ✓ Multiple column text with full column break and text formatting controls

**Well known insurance companies utilizing Papyrus**  
 Equitable Life Assurance ... Generali ... AXA Colonia  
 The Mutual Group ... Commercial Union ... Catalana Occidente  
 Zürich Insurance ... Winterthur Insurance ... and many more

*Says Chris Gardiner of Equitable Life Assurance, England:*  
 "Everything ISIS stated in their brochures including the print quality from the Papyrus Designer to Metacode to PCL5 has been delivered. In 4 months of trial we did not have a single unsolved problem."

## Telephone bills for multiple lines and services.

- ✓ Consolidated invoices combine all telephone services
- ✓ On the first page a dynamic box summarizes all payments. The amount due is shown on an attached payment slip for electronic payment transfer
- ✓ On subsequent pages a complex table structure is used to present the detailed information of calls for every phone line
- ✓ Documents are sorted by number of pages to support different envelope sizes
- ✓ To accommodate post processing equipment, a single formatting run produces documents last page first
- ✓ Formatting speed is up to 400.000 pages per hour on a single Pentium PC running WindowsNT
- ✓ Depending on the number of pages per document, the application is printed on an IBM 3900 continuous forms printer or on a Xerox cutsheet printer

**Major telephone providers around the world using Papyrus**  
 German Telecom/TeDe Mobil ... Swisscom ... Belgacom  
 Singapore Telecom ... Thai Telephone ... PTT Luxembourg  
 AMS American Management Systems ... and many more

*Says Peter Scholz of ivv, Germany:*  
 "The Papyrus Document System provides a standard architecture and a clearly defined strategy across all platforms with simply the best tools for document application development."