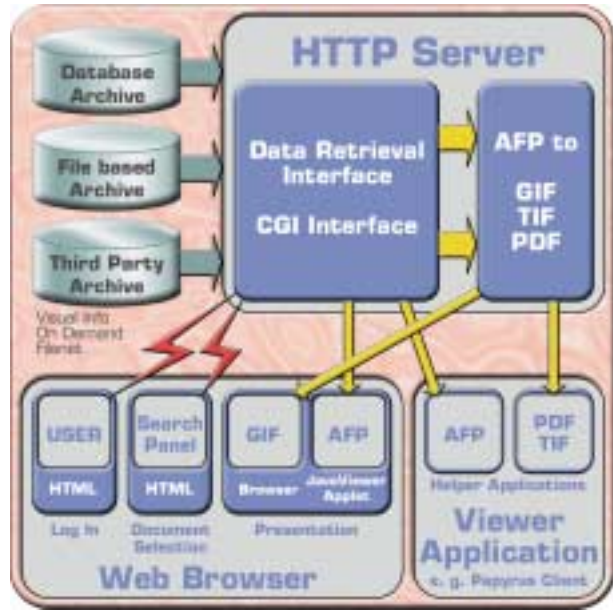


Papyrus WebArchive - Retrieval and Viewing



Using Papyrus WebArchive for Staging Applications

Customer Care

Clerks are constantly receiving telephone inquiries and need to quickly call up copies of the customer's documents i.e. bills that were mailed out and view them while handling the inquiry. A copy of the document can be sent to the customer by using local or central printing, faxing or e-mail.

Internet

Companies can provide an internet based service where all their customers can see their i.e. bills or statements using a browser and optionally print them.



The HTML screen is freely customizable

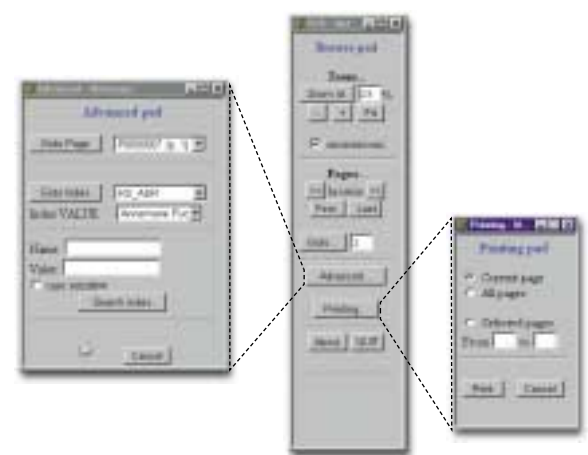
Authorization and Security

- ☼ Authorization password driven in the Internet browser under control of the HTTP Server
- ☼ Linking to existing authorization systems like RACF or database controlled authorization
- ☼ Using **Papyrus Desktop** - a role based object meta system with constraints and privileges



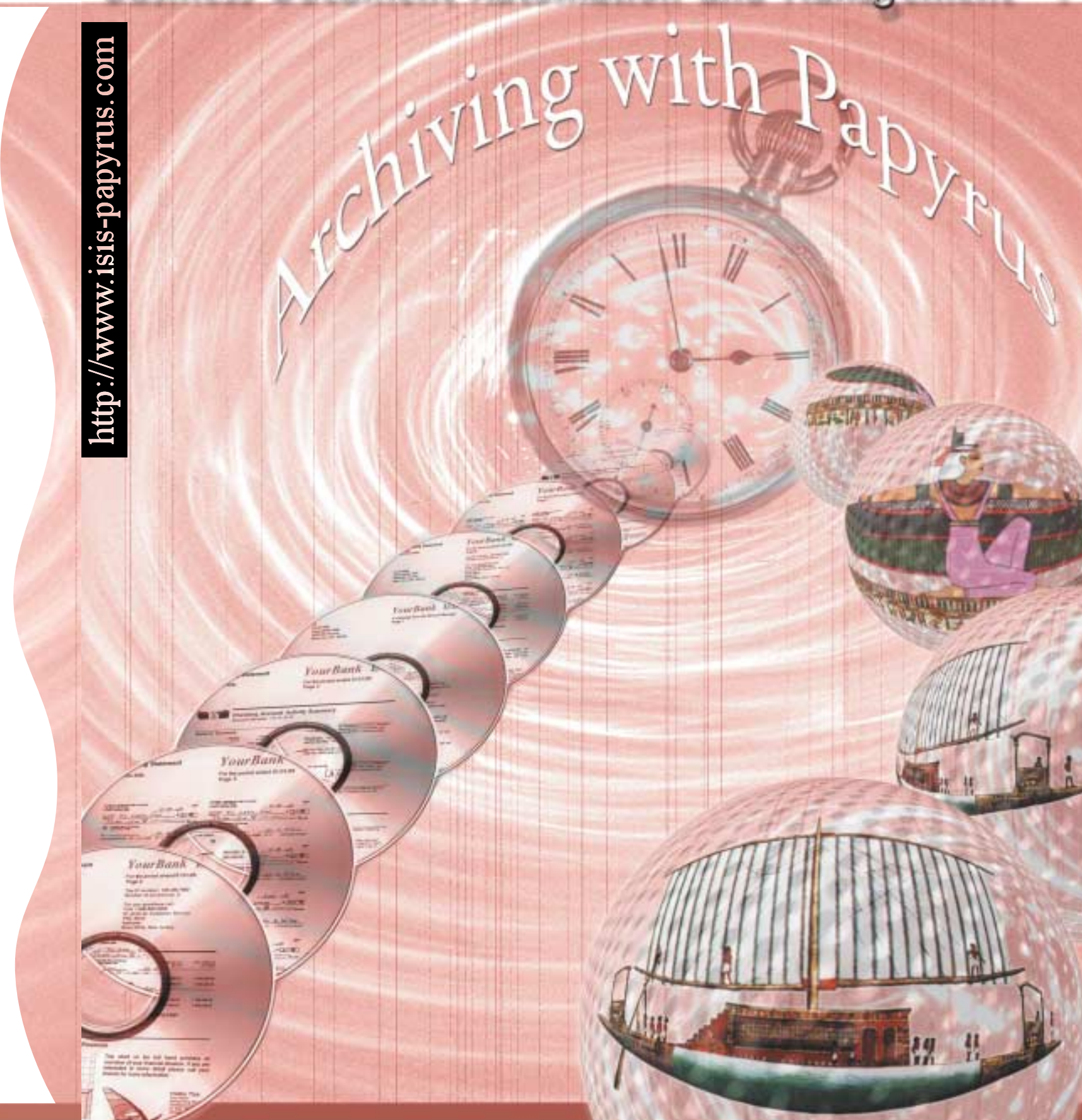
Viewing of archived documents

Viewing the resulting document with **Papyrus** provides in all cases 100% identical with the printed output. Papyrus does not substitute fonts but uses for display the original fonts (and resources) available locally or via HTTP from the library. The **Papyrus Client AFP Viewer** is a robust product capable of loading document files of several 100,000s of pages with fast index search capabilities. It can be installed locally or in the network and is internet enabled. The **Papyrus Java AFP Viewer** provides a window displaying the actual AFP document as well as a Browse Pad for zooming and page browsing. The Advanced Pad allows searching of the document and the Print Pad supports printing on a local printer.



If documents are converted to GIF they can be directly viewed in the browser. Other viewers support the converted TIFF or PDF files.

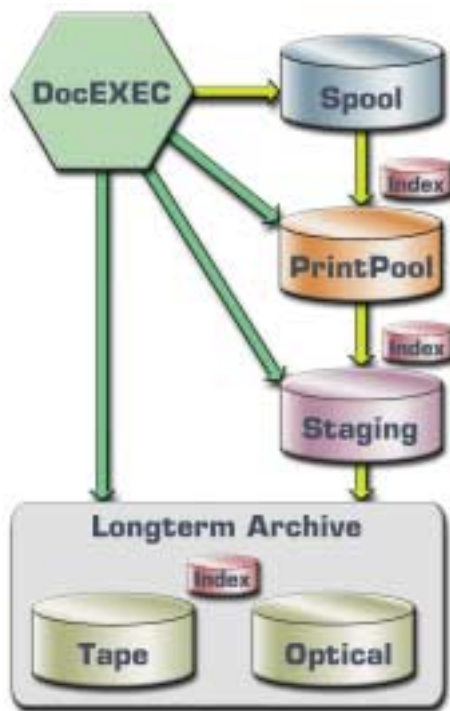
<http://www.isis-papyrus.com>



Evolution did not stop with walking upright.

The Concept

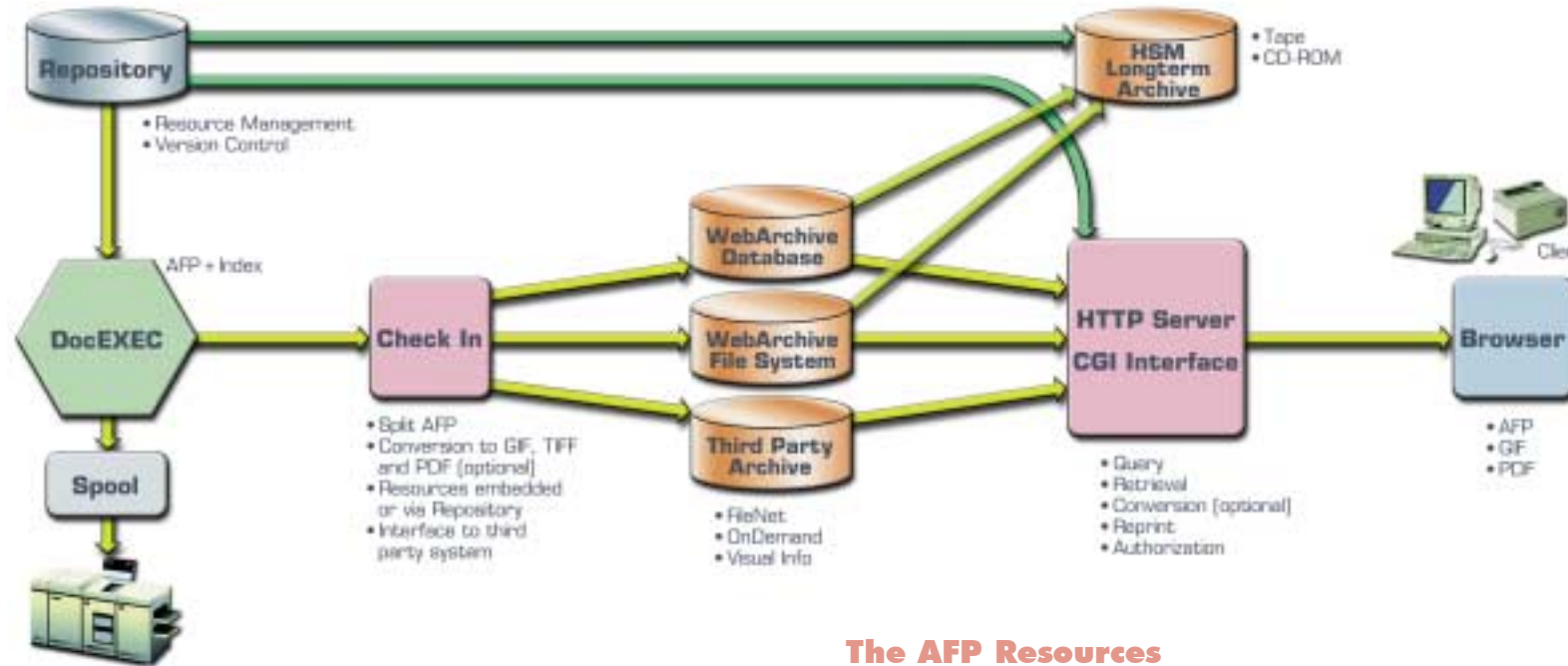
The **Papyrus** architected concept for Output Management includes the generation of the document index at the time of formatting and not from the spool. The index is used in the **PrintPool** for reprinting, bundling of different document types and for distribution. The index is also used for Staging to allow fast access for customer care and in the Longterm Archive with Hierarchical Storage Management to disk, tape or optical. A third party archive can be used to store BLOB's. Archive storage is compressed to 1k per page. Viewing of AFP documents can be done with **Papyrus Client** or the **Papyrus Java AFP Viewer**. Additionally conversions to GIF, PDF and TIFF are available.



Papyrus generates an electronic copy of the business document which is platform independent and can be bundled and sorted before being printed to any laser printer, e-mailed or faxed. Documents are developed only once, the same document developed for printing is also the document electronically presented over the Internet.

Benefits

- ☀ A completely integrated system for Archiving, Printing, Output Management and Web presentation
- ☀ Large cost and time savings by developing the document a single time for printing, output management, distribution, archiving and for the internet
- ☀ No additional effort for defining and extracting the index
- ☀ Platform independent and scalable
- ☀ Free choice of operating system and hardware
- ☀ Internet and Intranet capable
- ☀ Uses any Standard Storage Management products, for example: OS/390, DB/2, HSM, HTTP and Java for Web presentation
- ☀ Integration with Imaging and Document Capture



Deciding which document format to store

The stored document format considerably influences the storage requirements and the access times. Sizes for an average document page:

- AFP 2-5 kb uncompressed/no resources
- PDF 20-30kb (no fonts)
- TIFF (300 dpi) 50-70kb
- GIF 60-90kb

The AFP format size can be compressed to typically 1kb per page. Due to these very small file sizes it is recommended to use AFP as a storage format and if required conversion is done by the Papyrus WebArchive on the fly into PDF or GIF when the document is recovered for the viewing (in a browser).

The Archiving Process

Defining the document index:

The document indexes are simply defined during development with **Papyrus Designer** on a graphical user interface. No coding required. The document resources are stored in Papyrus Repository using version control.

Generating the index file:

Papyrus DocEXEC automatically generates the index records to the AFP (or to a ACIF file) during the normal formatting run. Index generation does not influence the formatting speed or cost additional CPU power.

Check In:

The AFP File is split into single documents and they are each checked into the archive using all the indexes (from the AFP). Optionally the AFP file can be converted into PDF, TIFF or GIF at this time. The archive can be a file system, a database system or a third party archive. **Papyrus** provides an XML interface to third party archives.

The AFP Resources

AFP resources can be imbedded into the AFP file or retrieved from an external library. Embedded resources require larger storage capacities due to duplication. External resources usually require version control, which is easily implemented with **Papyrus Repository**.

Calculating Storage Capacity

Example: 100,000 documents of 2 pages using the average sizes quoted earlier and an average index size of 1KB/doc:
 AFP 1.1 GB, PDF 6.1 GB, TIFF 14.1 GB, GIF 18.1 GB

Storage Media

DASD, Optical Disk, Tape, CD Rom

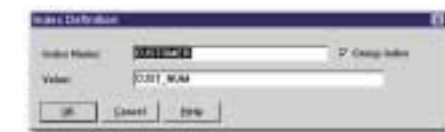
Supported platforms and database systems: OS/390: DB2; AIX, SUN Solaris, DEC Alpha, HP/UX: Oracle, DB/2; WinNT: DB/2, Sybase, SQL Server

Indexing

It is essential to index the documents in order to find them and retrieve them from the archive. The index is defined in the **Papyrus Designer** and generated during the **Papyrus DocEXEC** formatting run. To associate the index with the whole document a **GROUP INDEX** is defined.



Easy definition of the index in the **Papyrus Designer**:



The index file generated by **Papyrus DocEXEC** contains:
 GROUP INDEX CUSTOMER = CUST_NUM

The index can be embedded in the output AFP as Tag Logical Elements or it is generated to an external index file.

